

Providence R. I.
This plat accompanies
our report of this date.

PROVIDENCE, R. I.
CITY ENGINEER'S OFFICE
STREET LINE DEPT.

July 6 1888

013991

PLAT OF A ERNEST
STREET

FROM EDDY ST. TO ALLEN'S AVE.

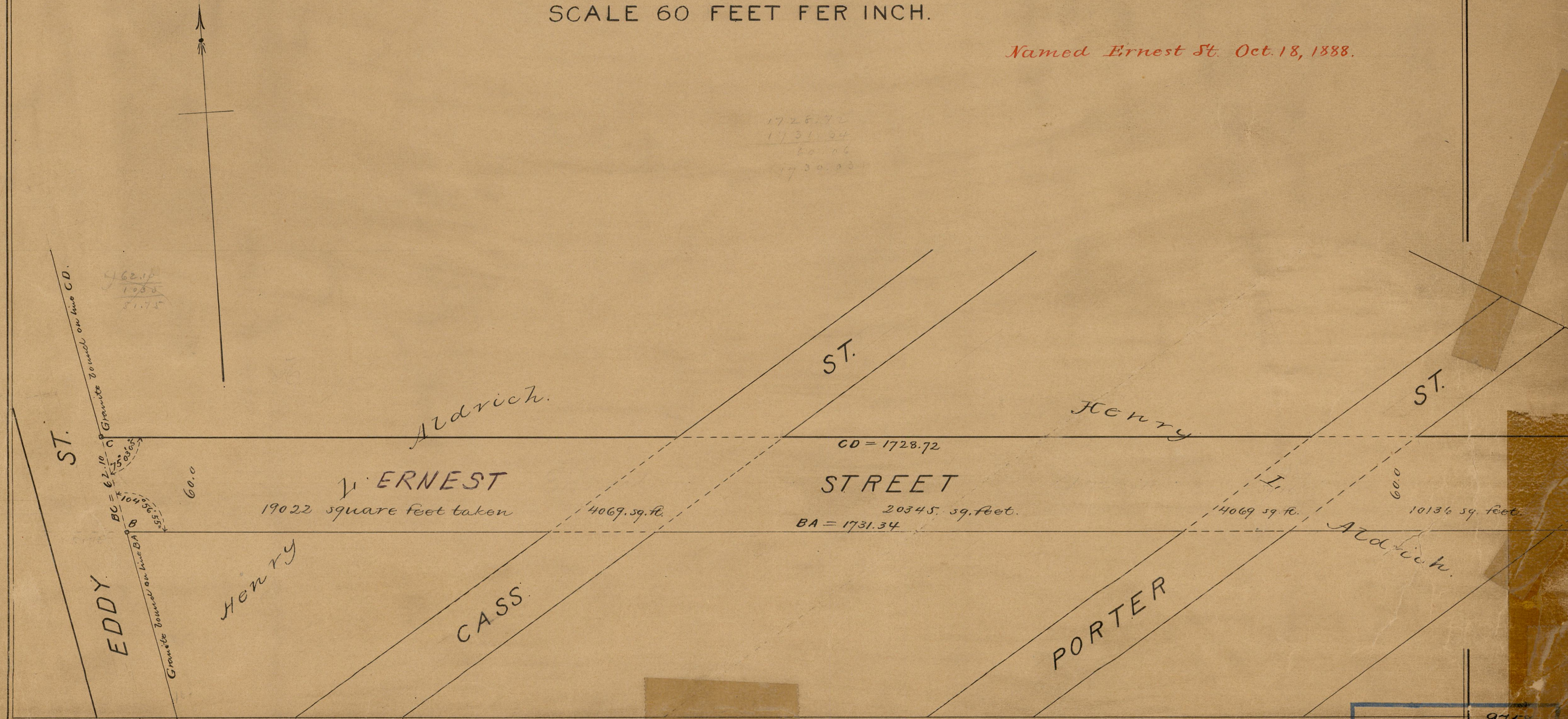
IN TWO SHEETS

SCALE 60 FEET PER INCH.

Named Ernest St. Oct. 18, 1888.

1728.72
1731.34
60.00
1730.34

62.10
1.000
81.75



OFFICE No.	9758
DRAWER	83
SHEET	B-8